



PNEUMATIC SHEAR

OPERATOR'S MANUAL

Part No. 147025



SPECIFICATIONS

Speed	2,800 RPM
Cutting Capacity	18 ga
Air Inlet	1/4"
Hose Size	3/8" I.D. (10mm)
Air Pressure	90 P.S.I. (6.2 bar)
Average Air Consumption	4 CFM (113 L/min)



IMPORTANT SAFETY INSTRUCTIONS



WARNING: Read all safety warnings, instructions, illustrations and specifications provided with this power tool. *Failure to follow all instructions listed below may result in electric shock, fire and/or serious injury.*

Personal Safety

- Stay alert, watch what you are doing and use common sense when using a power tool. Do not use while tired or under the influence of drugs, alcohol or medication.
- Maintain a balanced body position and secure footing.
- Repetitive work motions, awkward positions, and exposure to vibration can be harmful to hands and arms. If numbness, tingling, pain, or whitening of the skin occurs, stop using the tool and consult a physician.
- Dress Properly. Do not wear loose clothing or jewelry. Keep long hair, loose clothing and gloves from moving parts.
- Avoid accidental starting. Disconnect any air supply before performing any maintenance or tool changes.
- Always use personal safety equipment. Wear Safety glasses to protect eyes from fling debris. Proper hearing protection must be used for appropriate conditions.

Work Area

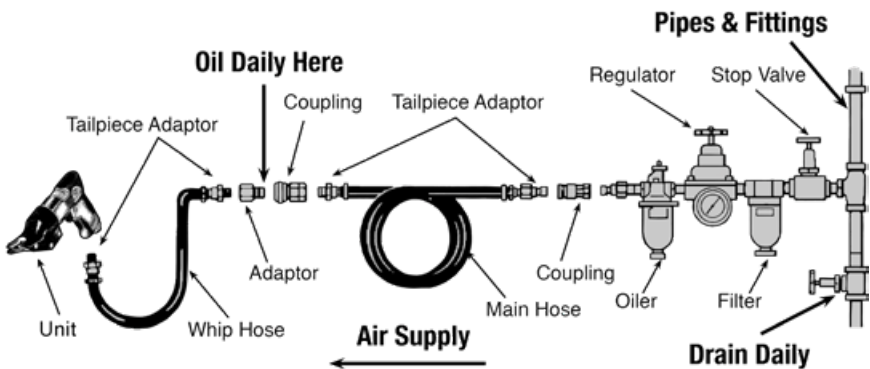
- Keep your work area clean and well lit. Remove any adhesives, oil, or foreign material from the work surface before removing spot welds.
- Do not operate tools in an explosive atmosphere. Sparks may ignite fumes or dust.
- Keep bystanders away while operating power tools.
- Slips/trips/falls are a major cause of serious injury or death. Be aware of excess hose left on the work floor.

Tool Use and Care

- Use support handle or other method to secure and support the work piece to a stable platform.
- Do not force the tool. Use the correct tool for your application. Using the correct tool which is specifically designed for a select job will provide better tool performance and make the job easier.
- Disconnect the air supply before making any adjustments, changing accessories, or storing the tool. Always disconnect the air supply before performing any inspection, maintenance or tool cleaning.
- Use only accessories recommended by the manufacturer for your model.
- When using a tool that is designed to have a guard, the guard should be in place to offer protection from flying debris, grinding residue or sparks.
- Do not leave the tool unattended when it is connected to an air supply.
- Use compressed air only.

OPERATING INSTRUCTIONS

Air Supply Setup and Connection



Recommended Air Line Components

- For optimal results you should incorporate a regulator, oiler and an inline filter.
- If you are not using an automatic lubricating system, before operating the tool, add a few drops of Pneumatic Tool Oil to the air-line connection. Add more after each hour of constant using.
- Do not exceed maximum air pressure of 90 PSI/ 6.2 bar or as stated on tool nameplate.

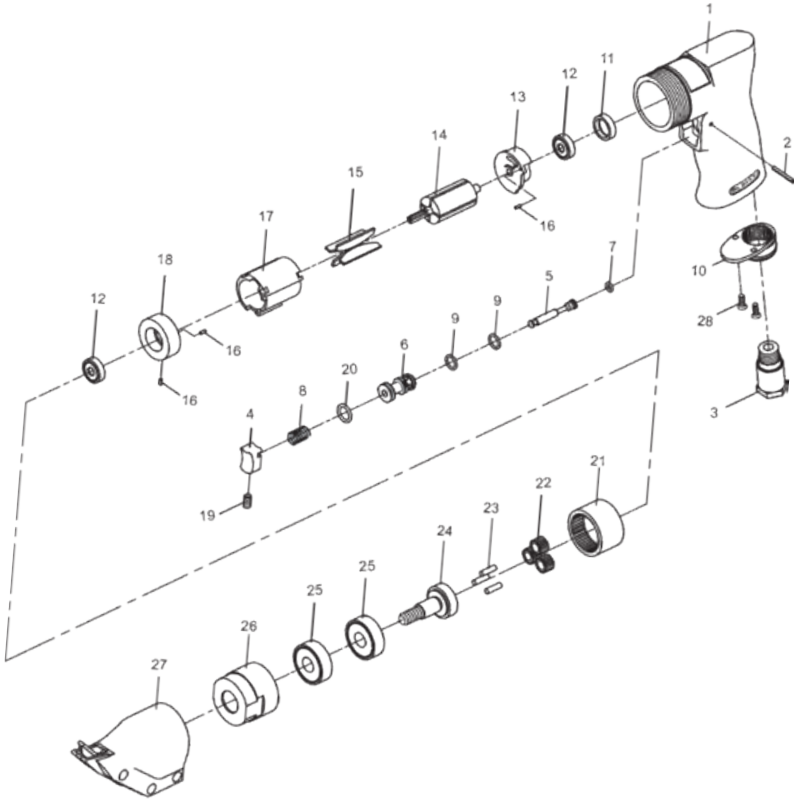
OPERATING INSTRUCTIONS

- Only use accessories recommended by Blair Equipment Company.
- Check the position of the reversing mechanism before operating the tool so as to be aware of the direction of rotation when operating.

Lubrication & Maintenance

- Lubricate the tool daily with a good grade of air tool oil.
- If no air line oiler is used, run a teaspoon of oil through the tool.
- The oil can be squirted into the tool air inlet, or into the hose at the nearest connection to the air supply. Then run the tool.
- A rust inhibitive oil is acceptable for air tools.

BREAKDOWN



#	Part #	Description	#	Part #	Description
1	70601	Motor Housing	15	70616	Rotor Blades (4)
2	73402	Spring Pin (2.5x22L)	16	70117	Spring Pin (3) (2x5L)
3	70103	Air Inlet	17	70118	Cylinder
4	70104	Trigger	18	70619	Front End Plate
5	70105	Valve Stem	19	70935	Set Screw (M4x8L)
6	70106	Valve Bushing	20	70123	O-Ring (11.8x2.4)
7	70107	O-Ring (4.8x1.9)	21	80222	Internal Gear
8	70108	Valve Spring	22	80223	Planet Gear (3)
9	70109	O-Ring (2) (9.8x1.9)	23	30124	Pin (3) (4x13.8L)
10	70110	Exhaust Diffuser	24	70626	Work Spindle
11	30111	Cap	25	080227	Ball Bearing (2) (6201z)
12	030113	Ball Bearing (2) (626ZZ)	26	20433-10	Shear Head Set
13	70614	Rear End Plate	27	70630	Front Housing
14	70615	Rotor	28	40309	Screw (2) (TS2.9)

PARTS LIST

#	Part #	Description	#	Part #	Description
1	70601	Motor Housing	15	70616	Rotor Blades (4)
2	73402	Spring Pin (2.5x22L)	16	70117	Spring Pin (3) (2x5L)
3	70103	Air Inlet	17	70118	Cylinder
4	70104	Trigger	18	70619	FronD End Plate
5	70105	Valve Stem	19	70935	Set Screw (M4x8L)
6	70106	Valve Bushing	20	70123	O-Ring (11.8x2.4)
7	70107	O-Ring (4.8x1.9)	21	80222	Internal Gear
8	70108	Valve Spring	22	80223	Planet Gear (3)
9	70109	O-Ring (2) (9.8x1.9)	23	30124	Pin (3) (4x13.8L)
10	70110	Exhaust Diffuser	24	70626	Work Spindle
11	30111	Cap	25	080227	Ball Bearing (2) (6201z)
12	030113	Ball Bearing (2) (626ZZ)	26	20433-10	Shear Head Set
13	70614	Rear End Plate	27	70630	Front Housing
14	70615	Rotor	28	40309	Screw (2) (TS2.9)

COMMERCIAL / INDUSTRIAL LIMITED WARRANTY

Blair Equipment Company warrants its Portable Magnetic Drills and Tornado II Paint Shakers for two (2) years and other products for ninety (90) days from date of purchase against defects due to faulty material or workmanship and will repair or replace (at its option) without charge any items returned. This warranty is void if the item has been damaged by accident or unreasonable use, neglect, improper service, or other causes not arising out of defects in material or workmanship. No other expressed warranty is given or authorized. Blair Equipment Company disclaims any implied warranty of Merchantability or fitness for any period beyond the expressed warranty and shall not be liable for incidental or consequential damages. Some states do not allow exclusion of incidental or consequential damages or limitation on how long an implied warranty lasts and, if the law of such a state governs your purchase, the above exclusion and limitation may not apply to you. This warranty gives you specific legal rights and you may also have other rights which vary from state to state.

To obtain warranty service, return the item(s), transportation prepaid to your nearest Factory Authorized Warranty Service Center, or to Blair Equipment Company, 3001 Hougen Drive, Swartz Creek, MI 48473.

This warranty is in lieu of any other warranty, expressed or implied, including any warranty of merchantability or fitness for a particular purpose.

Photographs and Specifications shown are accurate in detail at time of printing. Manufacturer reserves the right to make improvements and modifications without prior notice. Blair and Rotabroach are proprietary trademarks of Blair Equipment Company.

AUTHORIZED WARRANTY REPAIR CENTER

For Warranty Service, return all products, transportation prepaid to:

**Blair Equipment Company
3001 Hougen Drive
Swartz Creek, Michigan 48473**



Blair Equipment Company

3001 Hougen Drive • Swartz Creek, MI 48473

Phone (810) 635-7111

www.blairequipment.com

© 2024 Blair Equipment Company